

Diver-Office

Getting Started Guide



Copyright Information

© 2007 Schlumberger Water Services. All rights reserved.

No portion of the contents of this publication may be reproduced or transmitted in any form or by any means without the express written permission of Schlumberger Water Services.

Printed in Canada
2007

Table of Contents

Introduction	4
Launching Diver-Office	4
Creating a Project	4
Selecting Communication Method	5
Viewing Diver Settings	6
Programming a Diver	7
Starting a Diver	7
Stopping a Diver.....	8
Download & View Diver Data.....	8
Learning more about Diver-Office.....	9

Introduction

Diver-Office is a software package developed to read and program Diver groundwater dataloggers, download Diver monitoring data, and process and display Diver data. In combination with one or more Diver dataloggers, Diver-Office constitutes a complete and flexible measurement system.

This document is designed to serve as a 'quick-start' reference guide for those interested in getting started quickly using the most common features of Diver-Office. In this guide, you will become familiar with the following functions:

- Creating a Project
- Selecting Communication Method
- Viewing Diver Settings
- Starting a Diver
- Stopping a Diver
- Downloading Diver Data
- Viewing Data

Before proceeding, be sure that you have successfully installed Diver-Office and the device drivers for the Diver Reading Unit or Interface Cable. Also, make sure the Reading Unit or Interface Cable is connected to your computer.

1.1 Launching Diver-Office

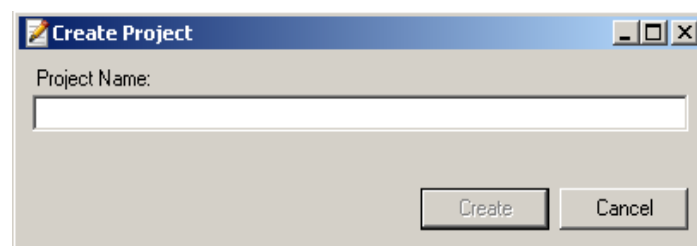
Once Diver-Office has been installed on your computer, launch the application by following the steps below:

- Go to **Start/Programs/SWS Software/Diver-Office**.

- Alternatively, double-click on the  **Diver-Office** short-cut, located on your desktop.

1.2 Creating a Project

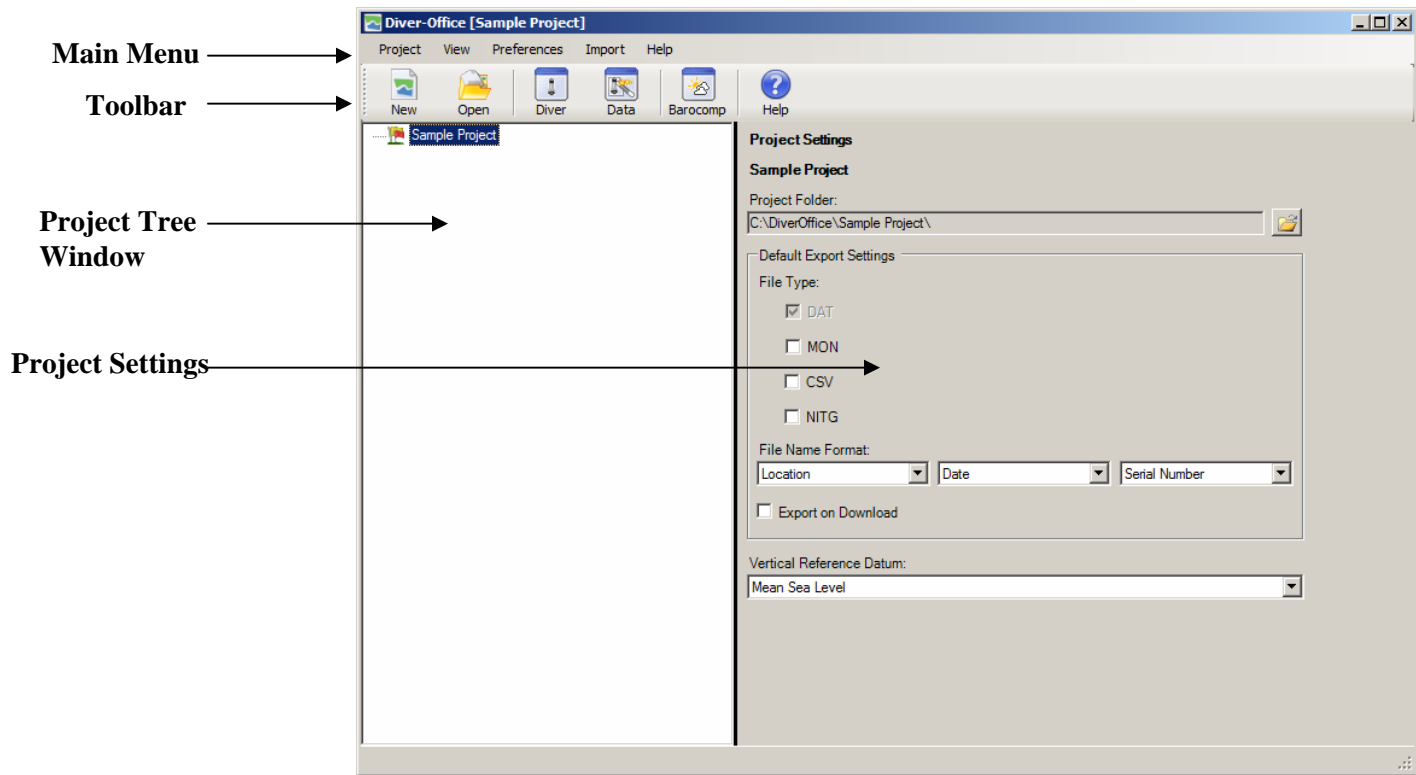
Upon launching Diver-Office for the first time, you will be prompted with a **Create Project** dialog (shown below).



Enter the name of the project, and click [**Create**].

Note: If this is not the first time launching Diver-Office, from the main menu, go to **Project/New** to create a new project.

Once created, the main Diver-Office interface will display (shown below).



Here you can define the **Project Settings** such as the default **Project Folder**, **Vertical Reference Datum** and **Default Export Settings**. For more information on these settings, please refer to the Diver-Office User's Manual.

Take a brief moment to explore the Diver-Office interface, before proceeding with the next section. Note the options in the **Toolbar**. Place your mouse cursor over each button to display a tool tip describing each button's function.

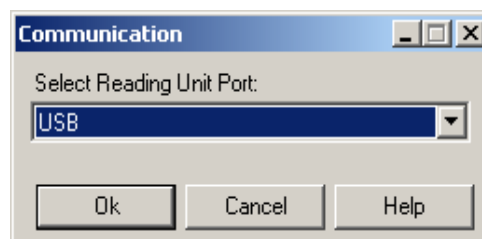
In the next section, we will define the communication settings.

1.3 Selecting Communication Method

Before you can communicate with Divers, you must specify the appropriate communication method. To do so,

- From the main menu, go to **Preferences \ Communication**

The following dialog will display:




From the dropdown list box, select the appropriate reading unit port. For example, if you are using a USB Reading Unit, select USB. If you are connecting to a Diver that requires a serial port connection, select the appropriate serial port.

After making the selection, click **[Ok]**.

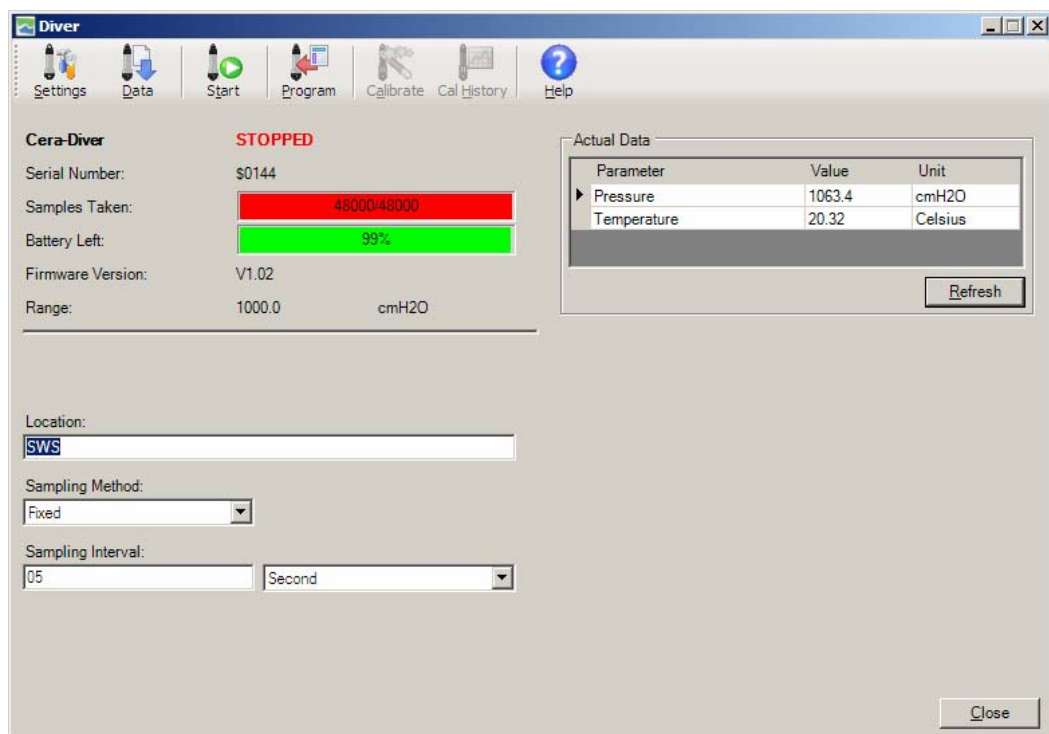
1.4 Viewing Diver Settings

Now that the communication method has been defined, Diver-Office can communicate with a connected Diver.

To read the settings of a Diver,

- Place a Diver in the reading unit.
- From the main menu, go to **View / Diver** or click the  **Diver** button from the toolbar. .

Diver-Office will automatically read the Diver and display its settings in the **Diver** dialog (shown below):



The Diver settings include:

- Diver type
- Diver status, i.e, Stopped, Started
- Number of samples taken
- Battery life remaining
- Location name, Sampling method and Sampling interval

To read more about each Diver setting, please refer to the Diver-Office User's Manual.

The **Diver** dialog is the main interface in which you can communicate with Divers. In addition to reading Diver settings, you can,


- Program Diver settings
- Start/Stop Divers
- Download Diver data into Diver-Office.
- Read actual data from connected Divers.

- Calibrate CTD-Diver

The next section describes how to program settings to the Diver.

1.5 Programming a Diver

You can change the settings of the Diver by editing the available fields and saving the new information to the Diver. To do so,

- Ensure that the Diver is placed in the reading unit
- Specify the new information for the desired fields. **Note:** Only **Location**, **Sampling Method**, **Sampling Interval**, **Altitude (CTD-Only)** and **Conductivity Range (CTD-Only)** settings can be modified.
- Once the new settings have been entered, click the  **Program** button from the toolbar.


Diver-Office will now save the new settings to the connected Diver.

You can verify that the settings were programmed by reading the **Settings** of the Diver.

1.6 Starting a Diver

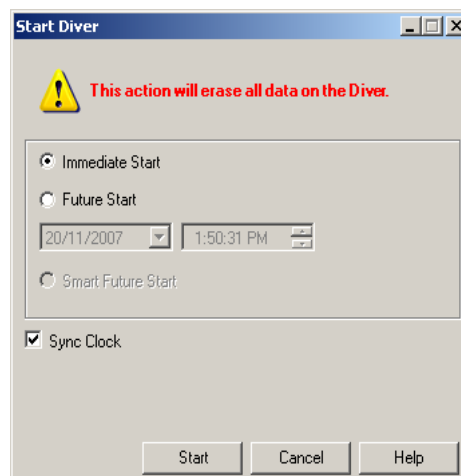
Once the settings have been programmed, the Diver can be started. When a Diver is started, it takes and stores samples based on the specified sampling method and interval defined in the Diver settings.

To start a Diver,

- Ensure the Diver is placed in the reading unit.
- From the **Diver** dialog, click the  **[Start]** button.

Depending on the sampling interval defined in the Diver settings, you may be prompted with a warning message indicating the estimated operating time of the Diver. If this message is shown, click the **[Yes]** button.

The **Start Diver** dialog will display (shown below):





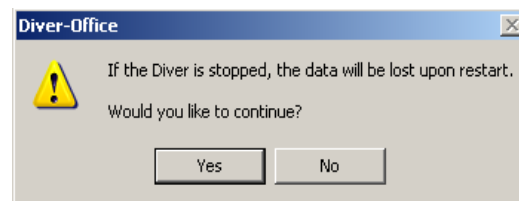
Here you can select from three different start methods: **Immediate Start**, **Future Start** and **Smart Future Start**. To read more about the various start methods, please refer to the Diver-Office User's Manual.

Once the desired start method is selected, click the **[Start]** button. The Diver status will now be shown as **STARTED** or **FUTURE START** in the Diver settings, depending on which method was selected. The Diver is now ready for deployment in the field.

1.7 Stopping a Diver

To stop a Diver,

- Ensure the Diver is placed in the reading unit.
- From the **Diver** dialog, click the  **Settings** button to display the current Diver settings. The Diver status should be shown as **STARTED**. You will notice that all of the settings fields (e.g **Location**, **Sampling Method** etc) are disabled.
- Next, click the  **Stop** button.
- A message will show, warning you that all stored data will be lost upon restart (shown below).




- Click the **[Yes]** button.

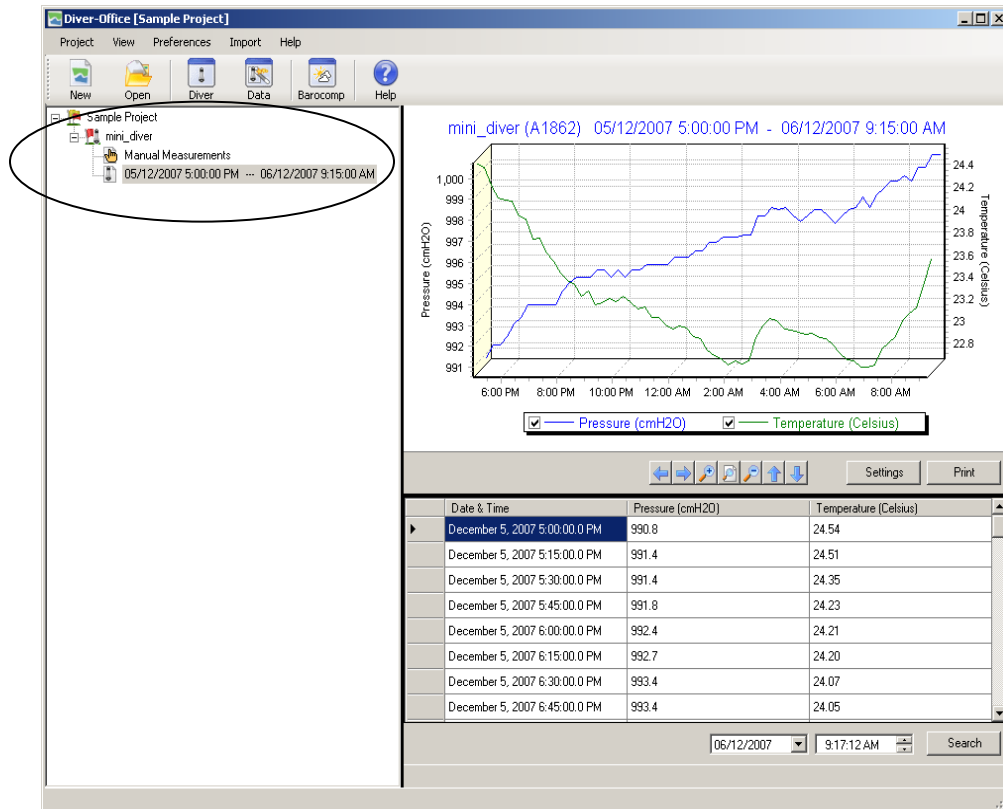
The Diver settings will be shown, and the Diver status will be **STOPPED**.

1.8 Download & View Diver Data

To download data from a Diver,

- Ensure the Diver is placed in the reading unit and that the settings have been read.
- Click the  **Data** button.

While Diver-Office downloads the data, the download progress will be shown in a progress bar. If the **Export on Download** option is selected in the Project Settings, the downloaded data will automatically export in the specified file types, to the project folder. Once complete, Diver-Office will add the location and its time-series data to the Project Tree (shown below).



The time-series data will be displayed as both a plot and table in the adjacent window.

1.9 Learning more about Diver-Office

This guide has introduced some of the more common tasks that can be performed in Diver-Office. To learn about Diver-Office in more detail, please consult the accompanying Diver-Office User's Manual. The User's Manual provides a succinct overview of all the Diver-Office features including:

- Navigating the Project Tree
 - Location Settings
 - Manual Measurements
 - Time-Series Plot settings
 - Printing time series
 - Searching time series data
- Diver Communication
 - Start/Stop Diver
 - Start methods
 - Read/Program Diver
 - Calibrate CTD-Diver
 - Reading CTD-Diver Calibration history
 - Reading Actual Data
- Data filtering
- Creating user-defined pumping tests
- Data Import/Export
- Changing Diver-Office default units
- Barometric Compensation

